



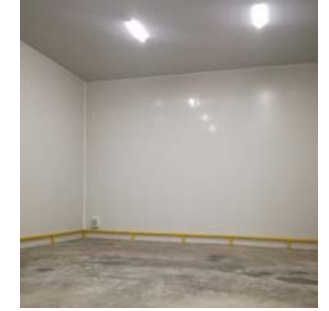
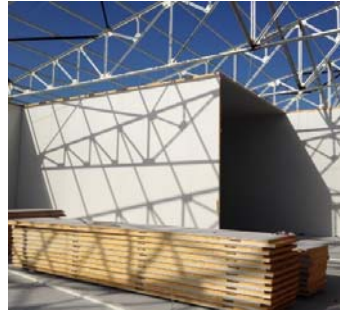
- *One of the leader company in refrigeration in TURKEY*
- *Worldwide standard manufacturing*
- *Providing solution in refrigeration sector more than 18 years*
- *Using leading brands and nowadays technology*
- *React fast for worldwide market and customer demands*
- *Always keeping quality at high and continuously provide new alternatives to the product range in the sector*
- *Experienced staff*
- *Fully equipped factories*
- *Designing carefully the projects for high cool efficiency with lower costs*
- *Specific production upon request*





COOLPAN

- *Polyurethane Density: 40 (-/+2) kg/m³*
- *Panels thicknesses (cm): 6, 8, 10, 12, 15, 20*
- *Panels width: 111 cm*
- *Length up to 1350 cm*
- *Interlock system*
- *Standard Surface: RAL9002, PVC, AISI304*
- *Specific production upon request*





COOLDOOR

- *Polyurethane Density: 40 (-/+2) kg/m³*
- *Wing thicknesses (cm): 4, 6, 8, 10, 12, 15*
- *Wing height up to: 300 cm*
- *Wing width up to: 1200 cm*
- *Standard Surface: RAL9002, PVC, AISI304*
- *Door/Wing frames: Panel, Aluminum, PVC*
- *Special frames for heat barriers*
- *Can be mounted on the building wall or panel wall*
- *Used high quality parts for long life and strong construction*
- *Possibility manufacturing in different sizes, with windows/portholes, resistances, automatic sliding door*
- *Specific production upon request*





COOLPACK

- *On manufacturing of refrigeration systems use high quality parts and leading brands.*
- *Europe origin compressors, control panels*
- *Monoblock, Hermetic, Semi-Hermetic, Central, Shock Freezers*
- *Special Refrigeration systems for Testing Rooms*
- *Refrigerant Gas R404A*
- *Manufacturing different cooling capacities*
- *Used high quality parts for long life and strong construction*
- *Designing the efficient system solutions for project*
- *Specific production upon request*





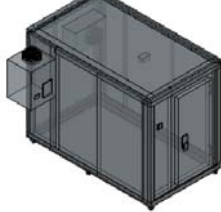
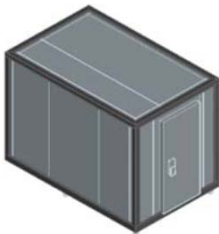
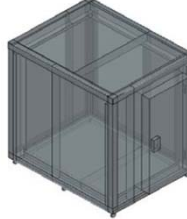
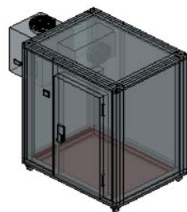
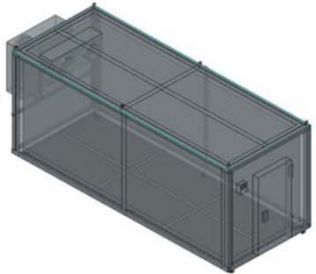
MORGUES

- *Polyurethane Density: 40 (-/+2) kg/m³*
- *Wall manufacturing with special made moulds*
- *Front or Side open doors*
- *Single, Double, Triple*
- *Optional surface inside/outside: PPGI, PVC*
- *Tray and supporting construction system from AISI304*
- *Wheels or legs depend from request*
- *Morgue temperature depend from request (0C, -20C, -5C...)*
- *Standard Product: inside/outside from 8 cm thickness 0,5mm AISI304*
- *Different designing according Customer request (cooling temperature, capacity, lowest costs, location, panel thickness)*





***MOBILE / SPECIAL DESIGNED
COLD STORAGES UPON REQUEST***





PHOTOS FROM PROJECTS

