

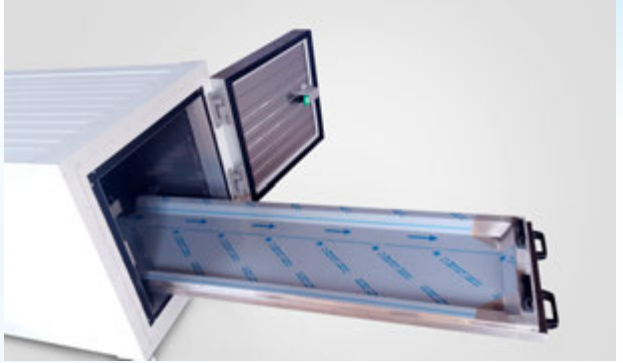
INDUSTRIAL REFRIGERATION SYSTEMS

ERDEMLER
SOĞUTMA

THE BEST
SOLUTION FOR
COOLING



MORGUE SYSTEMS



CONTAINER TYPE COLD ROOMS



PROJECTS



REFRIGERATION SYSTEMS

- ◆ For producing refrigerating systems used nowadays technology with leader Europe brands.
- ◆ Types: Hermetic, Semi-Hermetic, Scroll, Central Systems.
- ◆ Produced for cooling adjusted temperature range.
- ◆ Easy installation and maintenance.
- ◆ Include external unit (condenser, compressor & equipments), internal unit (evaporator, control panel).
- ◆ Used refrigerant gas R404A (HFC Free).
- ◆ Cooling System transported with Nitrogen loaded (18 BAR).
- ◆ Compressors used for Hermetic Systems: MANEUROP, CUBIGEL, TECUMSEH, HUAYI.
- ◆ Compressors used for Semi - Hermetic & Central Systems: DORIN, BITZER, REFCOMP.
- ◆ Electrical Equipments: SCHNEIDER, SIEMENS.



HINGED DOORS

- ◆ Polyurethane density 40 (+/-2) kg/m³
- ◆ Surface covering: RAL painted, PVC, AISI304
- ◆ Openable from inside even if it is locked from the outside
- ◆ Fast and easy assembling.
- ◆ 12mm & higher thickness added resistance
Anodized heat barriers for avoiding cold air outflow
- ◆ With or w/o threshold/skirt, left/right opening depend from customer requirements
- ◆ Door thicknesses: 6, 8, 10, 12, 15cm
- ◆ Can be manufactured in different sizes according to customer requirements
- ◆ Standard sizes: 80/180 cm, 90/190 cm, 100/200 cm



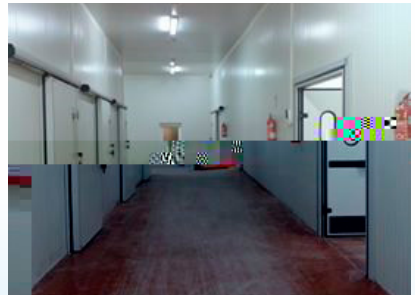
SLIDING DOORS

- ◆ Polyurethane density 40 (+/-2) kg/m³
- ◆ Surface covering: RAL painted, PVC, AISI304
- ◆ Fast and easy assembling.
- ◆ 12mm & higher thickness added resistance
- ◆ Anodized heat barriers for avoiding cold air outflow
- ◆ With or w/o threshold/skirt, left/right opening depend from customer requirements
- ◆ Door thicknesses: 8, 10, 12, 15 cm
- ◆ Widths: 100, 120, 140, 160, 180, 200
- ◆ Heights: 200, 210, 220, 230, 240, 250
- ◆ Can be manufactured in different sizes according to customer requirements (widths up to 300cm, height up to 1200cm)



FLIP-FLAP DOORS

- ◆ Flip-Flap doors can be mounted on cold room panels or construction type wall and opened 180 degrees in both directions, open durability when needed.
- ◆ Doors thickness 40 mm. Surface covering from RAL painted, PVC or AISI304
- ◆ Produced with portholes and kickers.
- ◆ Sizes (single wing): 90/190, 100/200, 120/200 cm
- ◆ Sizes (double wing): 140/200, 160/220, 180/240, 200/250cm
- ◆ Can be produced in different sizes according to customer requirements.



PANELS

- ◆ Polyurethane Density: 40 (+/-2) kg/m³
- ◆ Panels joint by male/female action and interlock system
- ◆ Surface materials: RAL painted (RAL9002 as standard), PVC, AISI304
- ◆ Panels width standard 111cm, length up to 13,5 m
- ◆ Panels thicknesses: 6, 8, 10, 12, 15, 20 cm



TIMELINE

Company
establishment

2000



Expansion of factory's
closed area

2007



Opening Marmara region
Office in İstanbul

2012



The 2nd Factory
started production

2014



2005



1.000 m² Kazan Factory started
production and GMS Cooling
Company Establishment located in
Kahramankazan/Ankara

2009



Purchasing of land
for new factory

2013



Starting construction of
second factory on
3.500 m² closed area

2018



Factory's
office opened

REFERENCES



MIGROS



beypiliç



NevGross



sarıoğlu



A-101

CERTIFICATES



ERDEMLER
SOĞUTMA

Central Office - Factory

- Orhaniye Mah. Sorgun Mevki, Kümeevler
No: 152 Kahramankazan / Ankara
- +90 (312) 395 44 40 - +90 (312) 395 44 41
+90 (312) 818 61 44 - +90 (312) 818 61 74
- +90 (312) 395 59 20

Marmara Region Office

- Merkez Mah. Kemerburgaz Cad. Lale Sok.
No: 62-16 Kağıthane / İstanbul
- +90 (212) 361 92 50

✉ info@erdemlersogutma.com.tr

🌐 www.erdemlersogutma.com.tr